

# Monash Health Referral Guidelines

## Iron Infusion FCM – Adult HITH

### EXCLUSIONS

Services not offered by Monash Health

- HITH does not investigate the cause of the iron deficiency.
- Patients who are not iron deficient (i.e. have serum ferritin > 30 µg/L)
- Patients who have a serum ferritin >30ug/L and no history of heart failure, chronic kidney disease or other chronic inflammatory condition.
- Patients under 18 years of age.
- Requirement for other forms of Iron Infusions e.g. Iron polymaltose
- Known history of severe allergic reaction to Ferric Carboxymaltose (FCM)

### CONDITIONS

Iron deficient serum ferritin ≤30 µg/L  
Iron deficiency in the setting of CKD or chronic inflammation

Requires IV FCM  
Refer to referral flow chart for referral criteria.

### PRIORITY

All referrals received are triaged by **Monash Health clinicians** to determine **urgency of referral**.

**URGENT**

The patient has a condition that has the potential to deteriorate quickly with significant consequences for health and quality of life if not managed promptly.

**ROUTINE**

The patient's condition is unlikely to deteriorate quickly or have significant consequences for the person's health and quality of life if the specialist assessment is delayed beyond one month

### REFERRAL

How to refer to Monash Health

#### Mandatory referral content

**Demographic details**  
**Clinical Details**  
**Diagnostics**

***Referral not accepted without:***

Pathology Results – full blood examination and iron studies within last month

### CONTACT US

#### Medical practitioners

To discuss complex & urgent referrals contact Switch 9594 6666 and ask for HITH on call registrar.

#### General enquiries

Call Switch 9594 6666 and ask for HITH.

**See next page for Referral Flowchart.**

Head of unit:  
Dr June Song

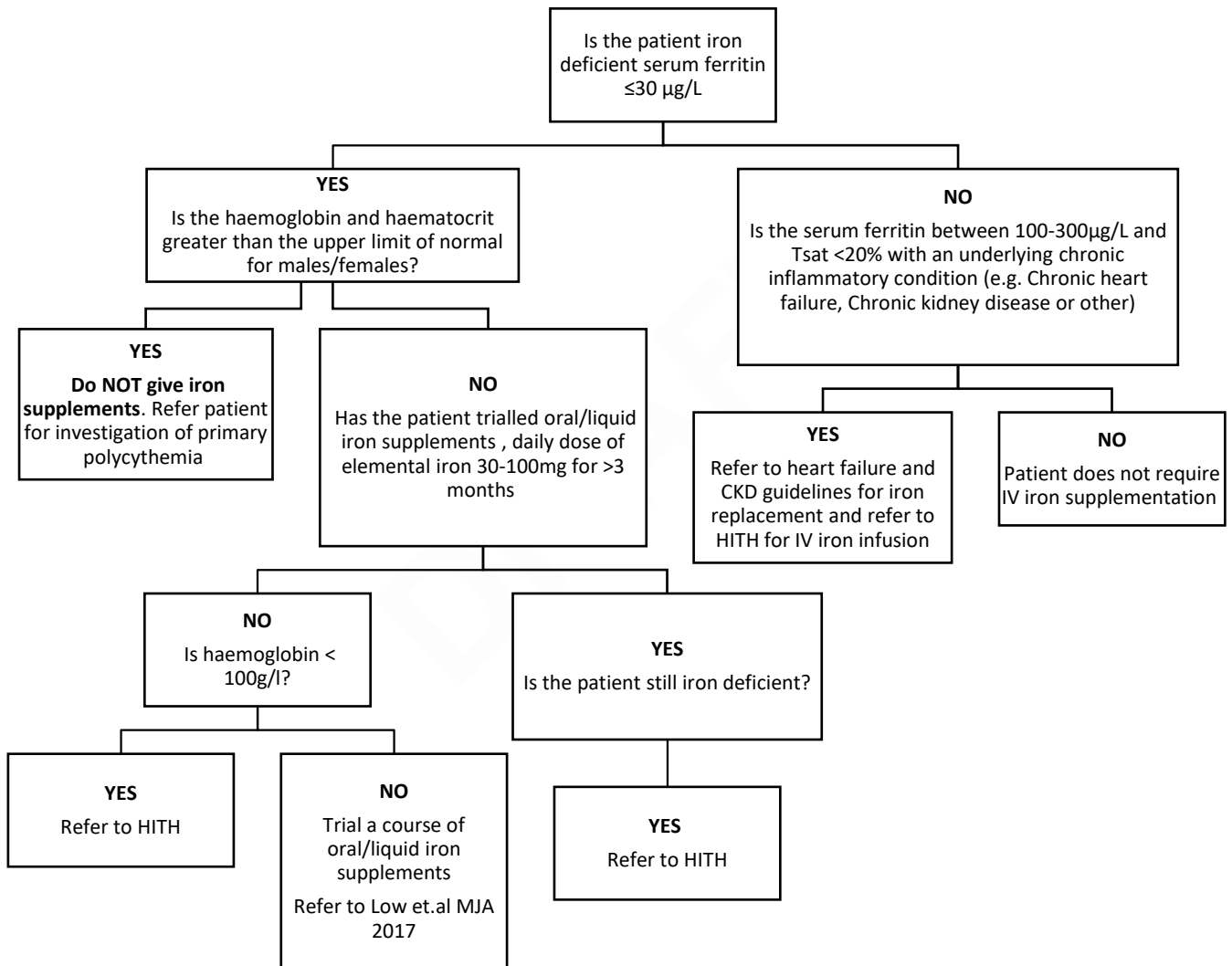
Program Director:  
Dr Maddi Howard

Last updated:  
13/05/2024

# Monash Health Referral Guidelines

## Iron Infusion FCM – Adult HITH

### Referral Flowchart



### References

Heart failure (National Heart Foundation) CKD guidelines (Kidney Health Australia)  
The European Renal Best Practice guideline

Head of unit:  
Dr June Song

Program Director:  
Dr Maddi Howard

Last updated:  
13/05/2024