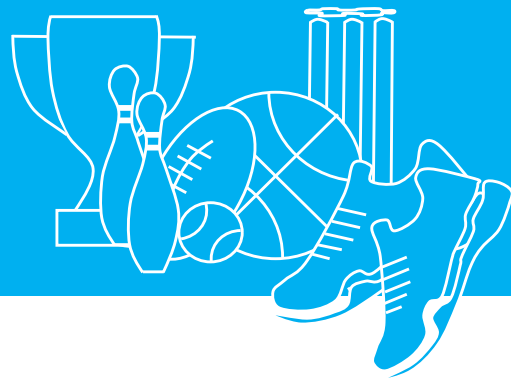


# HEALTHY SPORTS CLUBS



## RESPONSIBLE ALCOHOL CONSUMPTION HEALTH AREA



### BACKGROUND

Alcohol can be consumed in an enjoyable and responsible manner however, if not consumed at a safe level can result in risky behaviour. All clubs, whether they serve or do not serve alcohol, or permit consumption of alcohol on club grounds, must be aware of the associated risk factors of alcohol consumption. All clubs have a responsibility to the club community to provide a healthy, safe and welcoming environment that encourages the responsible use of alcohol.

### ACHIEVING THIS HEALTH AREA

The **Responsible Alcohol Consumption** health area involves supporting clubs to complete targets using the *Healthy Sports Clubs* framework, including:

- Ensuring any legislative requirements are adhered to
- Creating a supportive environment to prevent risky behaviour
- Promoting a family-friendly environment
- Improving the club culture
- Role modelling
- Ensuring the safety of the club community

Clubs that are a *Gold Level Good Sports Club* can receive automatic recognition for the Responsible Alcohol Consumption area in Healthy Sports Clubs.

**CONTACT MONASH HEALTH TO REGISTER YOUR CLUB:**

[healthpromotion@monashhealth.org](mailto:healthpromotion@monashhealth.org)